

North Carolina Property Mappers Association



President's Corner

The NCPMA sponsored workshops on Flood Mapping and the NC One Map were very informative and provided 8 credit hours toward recertification. I would like to thank Vic Spencer for organizing the workshops and making sure speakers were available for each location. I would like to thank Tammy Southern, Rich Elkins, and Vic Spencer for being facilitators at the workshop sites. Last, but definitely not least, I would like to thank our speakers; Tonda Shelton, Charity Peterson, David Giordano, Brett Spivey, Chris Kannan, Jeff Essic, Tom Tribble, John Derry, all who were kind enough to travel across the state to speak. Without all of these folks dedicating their time and talents our workshops would not have taken place.

Want to become a certified mapper, or just need credit hours, then register for our annual mapping school. Tammy Southern and her Education Committee are working hard to ensure that your mapping school experience will be fulfilling. This year's school will be held August 7-11, 2006 at Clemmons, NC. Please be sure and read the cancellation policy included on the registration form. There have been some questions concerning the cancellation policy in the past; therefore the Execu-

tive Board felt this policy should be included on all registration forms to avoid any confusion. Look for more information concerning Mapping School inside *The North Arrow*.

Ted Cisine, Conference Program Chair, has been really busy shaping up the Program for Conference. He has a lot of good speakers lined up for what is promising to be an outstanding conference. Ted's life is just full of excitement—of course, the conference isn't the only exciting thing in his life—he just became a new Daddy. Congratulations on the birth of Katelyn Alexis Cisine. She is a beautiful, healthy baby girl.

Published!!! We have a celebrity among our membership. Congrats to Rick Norejko for having the honor of being published in the March/April issue of *Fair & Equitable* and for getting the Cover Story spot and having his name appearing in large type across the front cover. We're so Proud! Great job Rick.

Speaking of accomplishments, we have another member that has bragging rights. Janet Spears just received the Cadastral Mapping Specialist (CMS) designation. NCPMA will be awarding

her a nice check at the Conference for her accomplishment. Congratulations Janet!

NCPMA is loaded with outstanding members, which brings me to another point, Mapper of the Year. Think about those members and take action to have them recognized by submitting a nomination form for Mapper of the Year. This is a SPECIAL award, which has special requirements. Keep an eye on the website (www.ncpropertymappers.org) for the requirements and for a nomination form.

The Legend is probably being printed as you are reading this newsletter. *The Legend* is given out at Mapping School. However, if nobody from your county attends Mapping School, your *Legend* will be mailed shortly after Mapping School.

There is a lot happening in our organization, and a lot of upcoming events. If you have any questions or concerns about the NCPMA, please contact me or any of the Executive Board. We are here to serve you.

Patricia Pike
NCPMA President

INSIDE THIS ISSUE:

PRESIDENTS CORNER	Cover
LEGEND UPDATE	2
CALENDAR OF EVENTS	3
2006 MAPPING SCHOOL	4
FALL CONFERENCE	5
PRE CONFERENCE WORK-SHOP	5
2006 MAPPING SCHOOL REGISTRATION	Included

Legend Update

Final work on this year's NCPMA Directory, *The Legend*, is underway, but we still have a few stragglers who haven't renewed their memberships! With deadlines extended and now long past, if you haven't renewed, then if you don't act immediately, you're going to be left out. That *would* be a shame, wouldn't it?

For those who have renewed, please take a moment to go to the NCPMA Website and check the "2006 Members by Name" page to make sure your listing is accurate. Corrections will be accepted as long as I can hold out with the printer, but by July it will definitely be too late. *Legends* will be printed in July and distributed at Mapping School to those counties and municipalities in attendance, then to everyone else shortly after.

Lastly, I would like to thank the volunteers of the Membership Committee, who have been a great help to me in trying to contact people and remind them of the need to renew, and Tammy Southern, last year's Secretary and *Legend* Editor for her guidance through the process.

Rich Elkins
2006 NCPMA Secretary & *Legend* Editor



NCPMA
Keeping You Connected

Calendar of Events

Deadlines to Remember...

- April 21st (past due) - Membership Renewals Deadline (Did you get yours in?)
- July 1st—Mapping School Registration Deadline
- July 1st—NCPMA Certification Applications Deadline
- July 6th Mapping School Room Reservations Deadline
- July 7th—Last Day To Cancel Mapping School Registration with full refund
- July 22nd—Last Day To Cancel Mapping School Registration with partial refund
- September 1st—Fall Conference Registration Deadline
- September 1st—Registration Opens For Workshop Attendees Not Going To Conference
- Deadline Not Set— Don't Forget Nominations For Mapper Of The Year!!

Book Mapping School Hotel Room Before July 6

July 2006

Su	Mo	Tu	We	Th	Fr	Sa
					1	
2	3	4	5	6	7	8
9	10	11	12	13	14	15
16	17	18	19	20	21	22
23	24	25	26	27	28	29
30	31					

NCPMA Mapping School Registration Deadline July 1

August 2006

Su	Mo	Tu	We	Th	Fr	Sa
		1	2	3	4	5
6	7	8	9	10	11	12
13	14	15	16	17	18	19
20	21	22	23	24	25	26
27	28	29	30	31		

September 2006

Su	Mo	Tu	We	Th	Fr	Sa
					1	2
3	4	5	6	7	8	9
10	11	12	13	14	15	16
17	18	19	20	21	22	23
24	25	26	27	28	29	30

NCPMA Mapping School- Clemmons, NC August 7-11

October 2006

Su	Mo	Tu	We	Th	Fr	Sa
1	2	3	4	5	6	7
8	9	10	11	12	13	14
15	16	17	18	19	20	21
22	23	24	25	26	27	28
29	30	31				

November 2006

Su	Mo	Tu	We	Th	Fr	Sa
			1	2	3	4
5	6	7	8	9	10	11
12	13	14	15	16	17	18
19	20	21	22	23	24	25
26	27	28	29	30		

December 2006

Su	Mo	Tu	We	Th	Fr	Sa
					1	2
3	4	5	6	7	8	9
10	11	12	13	14	15	16
17	18	19	20	21	22	23
24	25	26	27	28	29	30
31						

Website Info
 Always remember, the NCPMA website has up-to-date information, applications, vendor links, workshops and more available throughout the year.
 Thanks Rich for doing such a GREAT job!



NORTH CAROLINA PROPERTY MAPPERS ASSOCIATION NEWSLETTER

North Carolina Property Mappers Association

North Arrow Designer: Kevin Locklear
 Web Master Designer: Rich Elkins
 Content Editor: Tammy Southern

2006 MAPPING SCHOOL

The 2006 NCPMA Mapping School is returning to the piedmont area. The location will be at the **Village Inn Conference Center in Clemmons**. The dates are set for **August 7th - 11th**. We will be offering both regular and advanced classes. The hotel is very convenient to shopping and many restaurants. They are offering us a special rate of **\$62.00 per night** for single or double occupancy. There is an additional 13% occupancy tax. **Hotel reservations must be booked by July 6, 2006** to insure this rate. To reserve your room you can contact the **Village Inn** at 336.766.9121

As in years past we will be having a President's reception on Monday evening, and on Wednesday there will be a social that will include entertainment and dinner. The social will be an additional \$25.00 for those who wish to attend. As soon as we have confirmations we will announce more details over the NCPMA listserv.

Registration/Tuition is still \$200 for NCPMA members, and \$230 for non-members. There is a registration form included in this newsletter. You can get more details and a map of the school location at school.ncpropertymappers.org .

Mapping School registrations need to be received by July 1st.

If you have any questions or need additional information, please contact:

Tammy Southern
336.703.2376 phone
336.727.2369 fax
southetw@forsyth.cc

NCPMA Officers

PRESIDENT: Patricia Pike

patricia_pike@co.onslow.nc.us

910-989-2210



PRESIDENT ELECT: Vic Spencer

downoldsixty@hotmail.com

336-651-7311

VICE PRESIDENT: Tammy Southern

southetw@forsyth.cc

336-703-2376

PAST PRESIDENT: John Bridgers

jbridgers@yadkincounty.gov

336-679-4224

SECRETARY: Rich Elkins

relkins@co.edgemcombe.nc.us

252-641-7859

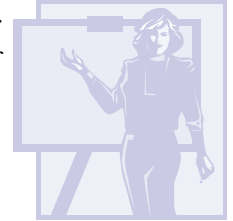
TREASURER: Steve Randone

srandone@brunscoco.net

910-253-2390

Fall Conference

The NCPMA Program Committee is actively preparing for this year's fall conference. To make this conference applicable and interesting to everyone, we are soliciting your input. We are aware that there are many projects and accomplishments that our members have been involved with in the past few years. Some of these accomplishments and projects go by un-noticed by your constituency, fellow members and peers. The Program Committee would like to hear from you concerning these in hopes that these ideas, projects and accomplishments can be shared with others. Please email me or call me with a description of your success stories. Hopefully we will be able to allow you or your staff time to share this at our conference and give you and your staff recognition.



Please do not hold back. We are a group that survives and thrives with the sharing of knowledge and resources of our members. I look forward to hearing from many of you. Phone (704)920-2173, email tcisine@cabarruscounty.us Thanks.

Ted Cisine

Land Records Manager

Cabarrus County Tax Administration



Pre Conference Workshop

As the result of the success of last year's pre-conference workshop, we will once again be offering a workshop for a total of eight hours credit. We are fortunate to have contracted Mr. Tom Hepler of C.H. Engineering in Raleigh to conduct an intensive workshop on reading and understanding D.O.T. right of way plans. Mr. Hepler has been providing this training session to D.O.T. employees and is in the process of updating the program and manual. The program will be divided into two sessions, the first on Tuesday, October 10th from 1 to 5 pm and the second on Wednesday October the 11th from 8 to 12 am.

Attendance is free to those registered for the conference. There will be a \$25 fee for members who wish to attend the workshop only. *We will guarantee admission for our membership through September 1st, subject to availability.* At that time we will open registration to non-members for a fee of \$55. The sessions will be held in the main auditorium at the Sheraton Imperial.

A conference registration form is included on the next page, for all conference attendees attending the workshop or not. Workshop-only registration forms will be in the next issue of the *North Arrow*, but they are available on the NCPMA website NOW!

